



redrose

19 Weavers Court

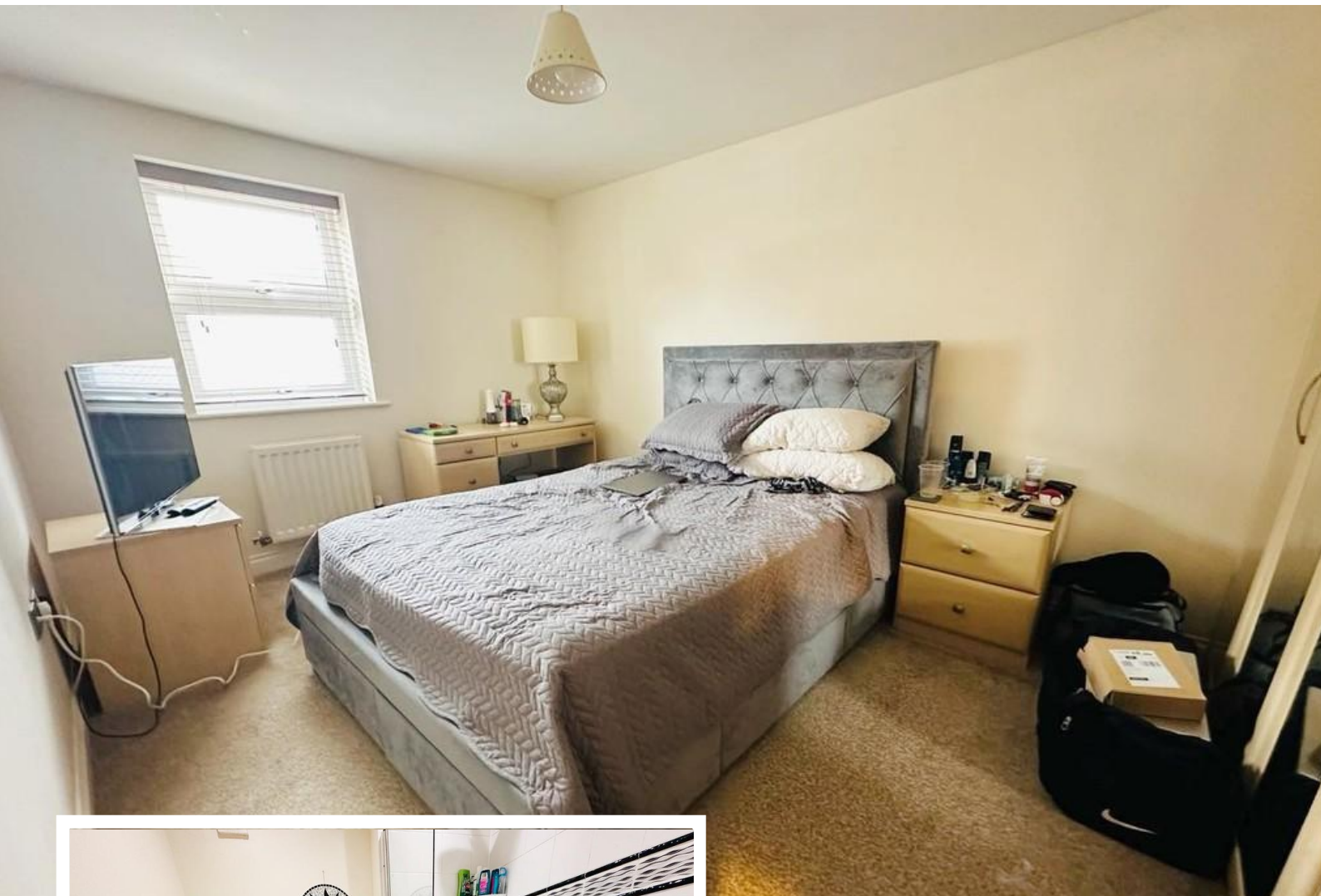
Buckshaw Village, Chorley, PR7 7AS

Fabulous 2 bedroom ground floor apartment with large lounge, separate kitchen with integrated appliances and great size double bedroom along with an ample single and bathroom. Perfect for a downsize or first time buy. Offered for sale with NO CHAIN. Alloted parking to the rear.

Asking Price Of £110,000

EPC Rating '71'





Property Description

ENTRANCE HALLWAY

Laminate flooring, single radiator. Solid wood doors to all rooms

LOUNGE

4.64 x 3.34 max Downlights, single and double radiator and double glazed window to rear aspect. Feature a fireplace with electric insert, great size, ideal for a small table too.

KITCHEN

3.03 x 2.08 max Fitted wall and base units with integrated fridge/freezer, dish washer and washer dryer. 4 ring hob and extractor, oven and stainless steel basin and drainer. Partially tiled splash backs, down lighting, single radiator and double glazed window to rear aspect.

BATHROOM

1.96 x 1.87 max Three piece white suite with W.C, wash hand basin with partially tiled splash back, bath with shower and shower screen, partially tiled elevations and



heated towel rail.

BEDROOM

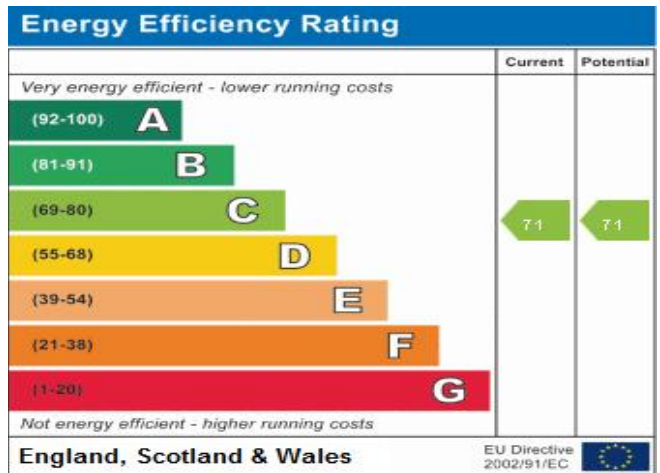
4.50 x 2.90 max Carpeted with fitted wardrobe, double glazed window to front aspect and double radiator. There is a TV socket point and phone line socket point.

BEDROOM TWO

2.80 x 2.90 max Carpeted, single radiator and double glazed window to front aspect.

MORTGAGE

If you would like a Free Mortgage Consultation our Financial Adviser will be able to meet with you discuss your requirements and to assess your mortgage capability. You will receive professional and independent mortgage advice along with any other associated services.



Address:

19 Court Buckshaw Lane Chorley Lancashire

Redrose
15 Barnes Wallis Way
Buckshaw Village
Chorley
Lancs

www.redrosepm.co.uk
sales@redrose.co.uk
01772 456558

Agents Note: Whilst every care has been taken to prepare these sales particulars, they are for guidance purposes only. All measurements are approximate and are for general guidance purposes only and whilst every care has been taken to ensure their accuracy, they should not be relied upon and potential buyers are advised to recheck the measurements